

Fan Filters

Pfannenberg

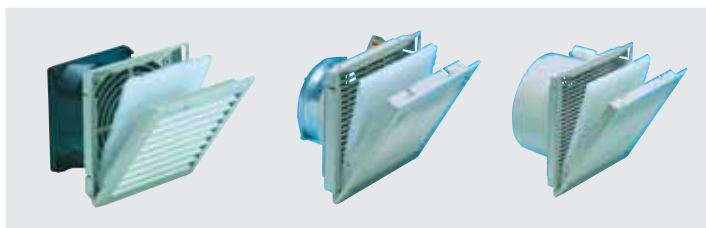
Reference No	Dimensions H x W x D (mm)	Installation Cut out (mm)	Airflow Volume* (m³/h)	Voltage (V <sub>AC</sub> )	Freq. (Hz)	Power Consumption (W)	Protection Degree	Noise Level dB(A)
<b>FFPF 1000</b>	105 x 105 x 52	92 x 92	24 / 15	230 / 115	50 / 60	12	IP 43	39
<b>FFPF 2000</b>	150 x 150 x 72	125 x 125	58 / 43	230 / 115	50 / 60	19	IP 54	49
<b>FFPF 2500</b>	250 x 250 x 111	223 x 223	155 / 108	230 / 115	50 / 60	18	IP 54	53
<b>FFPF 3000</b>	250 x 250 x 121	223 x 223	255 / 231	400 / 230 / 115	50 / 60	45	IP 54	55
<b>FFPF 5000</b>	325 x 325 x 157	291 x 291	478 / 368	230 / 115	50 / 60	74	IP 54	69
<b>FFPF 6000</b>	325 x 325 x 158	291 x 291	606 / 437	400 / 230 / 115	50 / 60	110	IP 54	71
<b>FFPF 7000</b>	325 x 325 x 117	291 x 291	755 / 545	400 / 230 / 115	50 / 60	106	IP 54	72

Colour: (RAL 7035w).

Protection Degree: IP 55 on request

\*Unimpeded Airflow / Airflow in

Combination (Filter fan + Exhaust filter)



Exhaust Filters

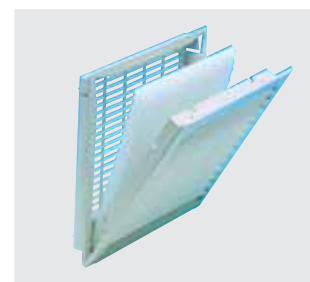
Pfannenberg

Reference No	Dimensions H x W x D (mm)	Installation Cut out* (mm)	Filter Mat g/m²	Protection Degree
<b>FFPFA 1000</b>	105 x 105 x 10	92 x 92	150	IP 43
<b>FFPFA 2000</b>	150 x 150 x 27	125 x 125	150	IP 54
<b>FFPFA 3000</b>	250 x 250 x 30	223 x 223	150	IP 54
<b>FFPFA 6000</b>	325 x 325 x 30	291 x 291	150	IP 54

Colour: (RAL 7035w).

Protection Degree: IP 55 on request

\* Sheet steel thickness ≤ 2mm.



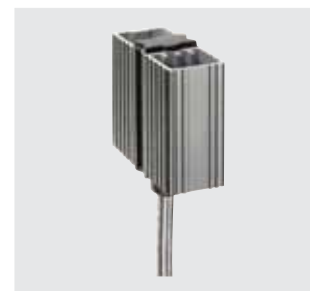
Heaters

Stego

Semiconductor Heater

Reference No	Dimensions H x W x D (mm)	Heating Capacity (W)	Voltage (V <sub>AC</sub> )	Freq. (Hz)	Protection Degree
<b>HTHGK 04700</b>	50 x 50 x 25	10	120 - 250	50	IP 54
<b>HTHGK 04701</b>	60 x 50 x 25	20	120 - 250	50	IP 54
<b>HTHGK 04702</b>	70 x 50 x 25	30	120 - 250	50	IP 54

Reference No	Dimensions H x W x D (mm)	Heating Capacity (W)	Voltage (V <sub>AC</sub> )	Freq. (Hz)	Protection Degree
<b>HTHG 14000</b>	65 x 70 x 60	15	120 - 250	50	IP 20
<b>HTHG 14001</b>	65 x 70 x 60	30	120 - 250	50	IP 20
<b>HTHG 14003</b>	65 x 70 x 60	45	120 - 250	50	IP 20
<b>HTHG 14005</b>	140 x 70 x 60	60	120 - 250	50	IP 20
<b>HTHG 14006</b>	140 x 70 x 60	75	120 - 250	50	IP 20
<b>HTHG 14007</b>	140 x 70 x 60	100	120 - 250	50	IP 20
<b>HTHG 14008</b>	220 x 70 x 60	150	120 - 250	50	IP 20



Fan Heater

Reference No	Dimensions H x W x D (mm)	Heating Capacity (W)	Voltage (V <sub>AC</sub> )	Freq. (Hz)	Protection Degree
<b>HTHGL 04640</b>	182 x 85 x 100	250	120 - 250	50	IP 20
<b>HTHGL 04641</b>	222 x 85 x 100	400	120 - 250	50	IP 20

