

Prime Line

Height units*	Width A (mm)	Height B (mm)	Depth C (mm)	Enclosures Reference No	Weight (kg)
29 U	600	1425	800	PDR 062908	30.1
36 U		1735	800	PDR 063608	32.9
40 U		1910	800	PDR 064008	34.6
44 U		2090	800	PDR 064408	36.2

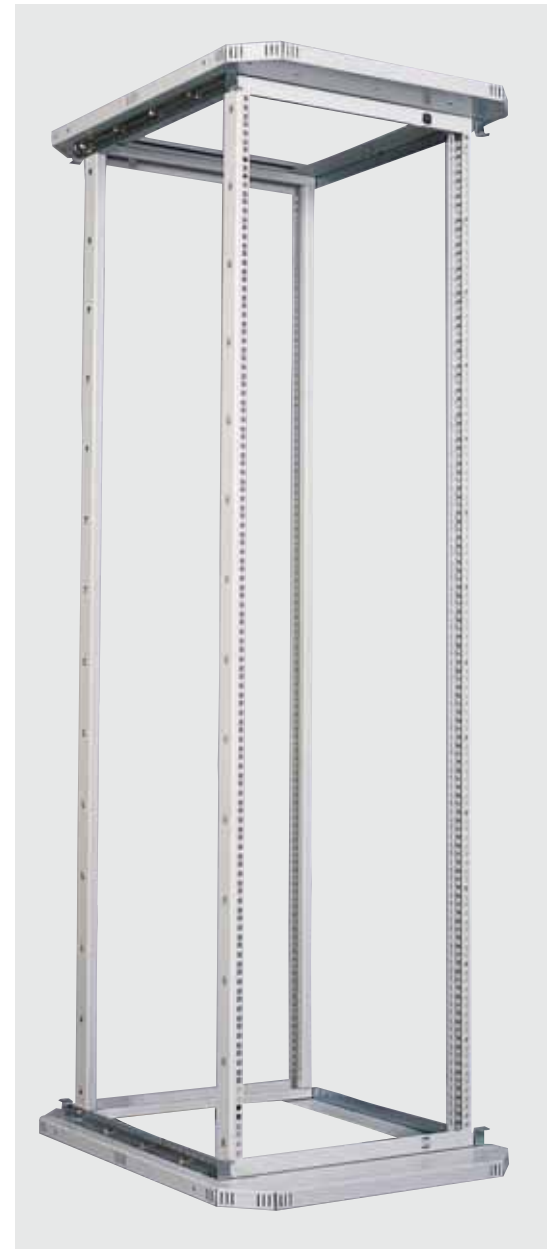
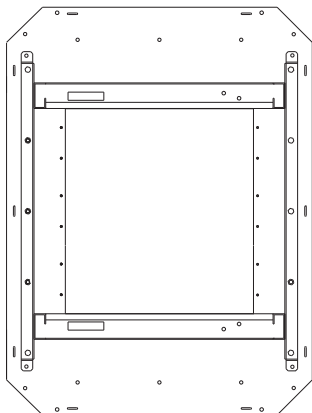
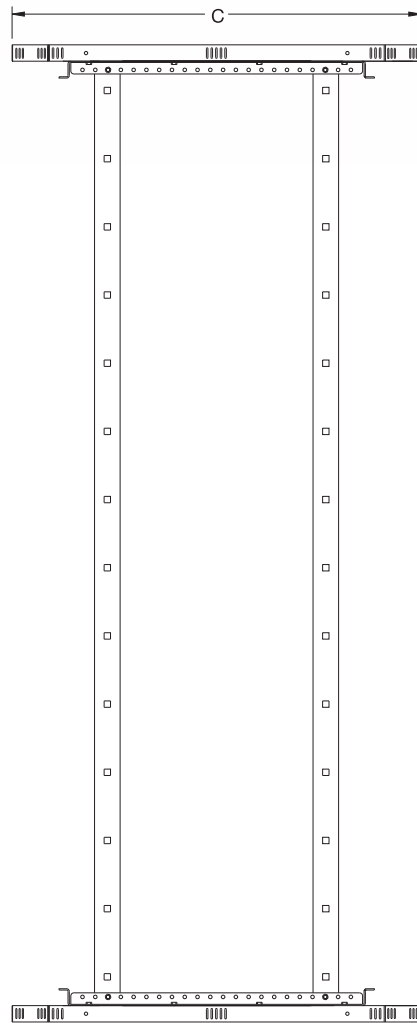
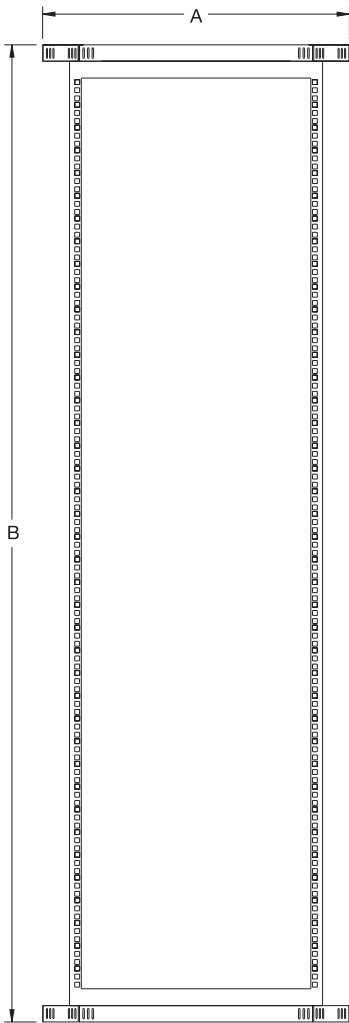
* 1U = 44.45mm

Characteristics :

- Sheet steel frames : 2 mm top & bottom tray : 2 mm
- 19" depth adjustable (every 20mm) front and rear frames.
- Depth adjustment profiles.
- Powder coating (RAL 7035w).

On Request :

- Special colour.
- Special mounting plate.
- Special sizes.
- Pre-punching.
- Special Racks.



Prime Line

Top Protection Plate

Width A (mm)	Depth C (mm)	Protection Plate Reference No
600	800	PEC US0608

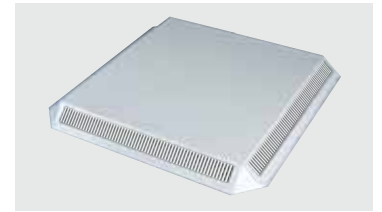
Material : Sheet steel 1.5 mm, powder coating (RAL 7035w).



Vented Dust Protection Hood

Width A (mm)	Depth C (mm)	Protection Hood Reference No
600	800	PEC UK0608

Material : Sheet steel 1.5 mm, powder coating (RAL 7035w).



Top and Bottom Partial Cover Plates

Blank cover plates.

Plate Height	Reference No
100 mm	PEC PDK010
200 mm	PEC PDK020



Brushed cable entry cover plate.

Plate Height	Reference No
100 mm	PEC PDC010



Perforated (vented) cover plate.

Plate Height	Reference No
200 mm	PEC PDP020



Material : Sheet steel 1.5 mm, powder coating (RAL 7035w).

Cover plate with grilled fan (2 fans fitted).

Plate Height	Reference No
200 mm	PEC PDF020F



Cover plate with grilled filter (2 filters fitted).

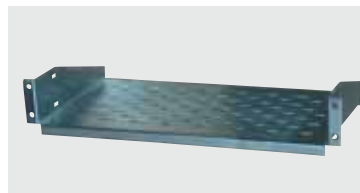
Plate Height	Reference No
200 mm	PEC PDH020F



19" Equipment Shelf

Shelf Depth	Shelf Reference No
240 mm	PEC RPC0602

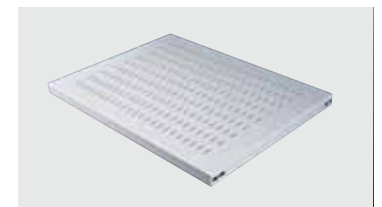
Material : Sheet steel 1.5 mm , zinc plated, colour passivated(Cr⁺³ free).



19" Adjustable Perforated Shelf

Depth C (mm)	Shelf Reference No
800	PEC RPA0608

Material : Sheet steel 1.5 mm, powder coating (RAL 7035w).



19" Pull Out Perforated Shelf

Depth C (mm)	Shelf Reference No
800	PEC RPT0608

Material : Sheet steel 1.5 mm, powder coating (RAL 7035w).

